

## Crane load diagram:

### Crane forward:

Type: HS Marine Crane AKC-370 HE2

### Crane arm length: Maximum crane load:

4,34 m	55,0 t
5,32 m	53,0 t
8,42 m	33,0 t
10,55 m	25,5 t
13,10 m	20,1 t

### Position:

### Distance from crane base:

Port side	4,00 m
Bow	3,50 m
Centre Bow roller	5,00 m
Starboard side	9,50 m

### Crane aft:

Type: HS Marine Crane AKC-370 HE2

### Crane arm length: Maximum crane load:

4,34 m	55,0 t
5,32 m	53,0 t
8,42 m	33,0 t
10,55 m	25,5 t
13,10 m	20,1 t

### Position:

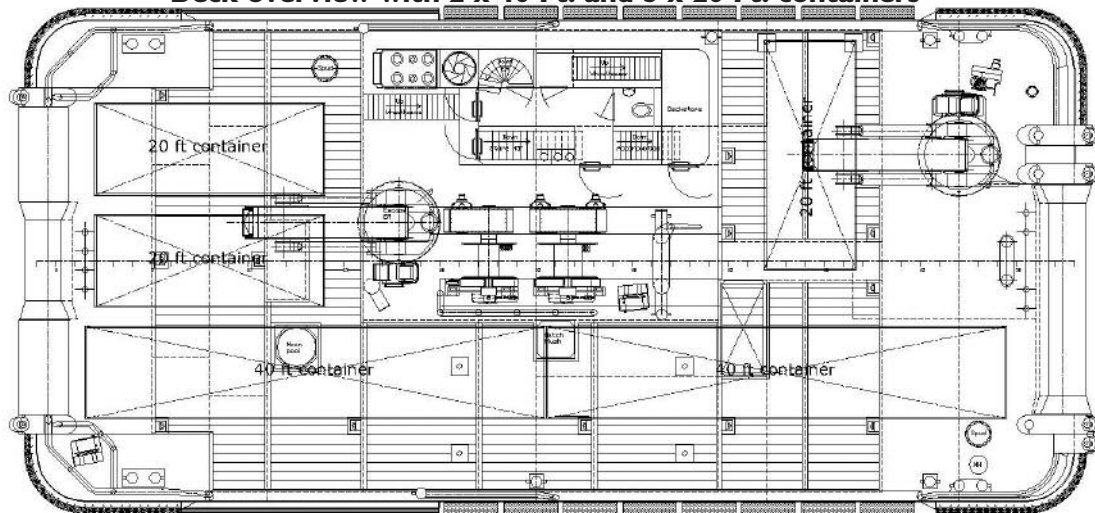
### Distance from crane base:

Port side	6,00 m
Centre stern roller	10,00 m
Moon pool	4,25 m
Starboard side	7,75 m

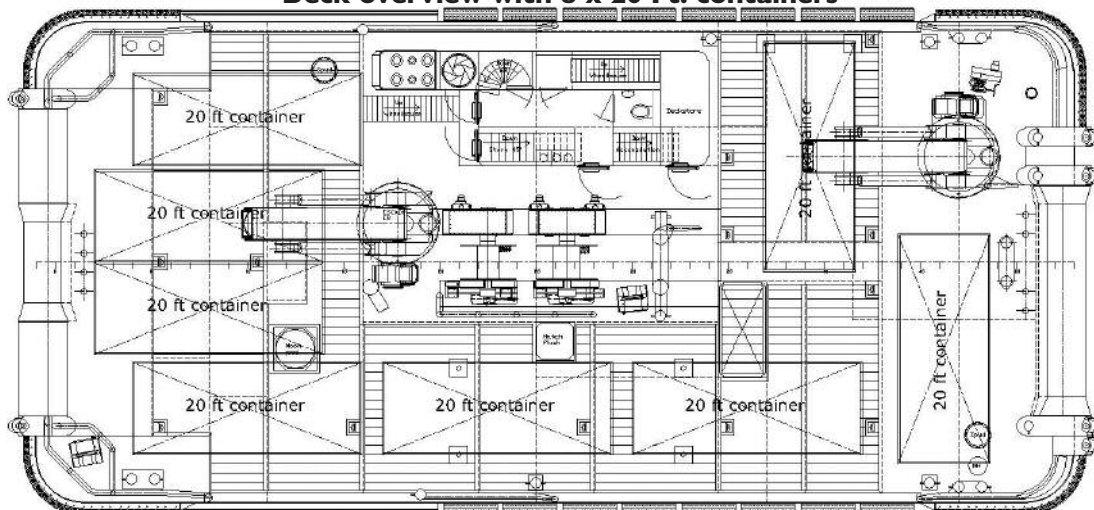


Dredging Support B.V.

Deck overview with 2 x 40 Ft. and 3 x 20 Ft. containers



Deck overview with 8 x 20 Ft. containers



Deck overview with floating dredge pipe  $\varnothing 2100$

